



ANWENDUNG

- ◆ **Schiffbau**
 GL, KRS
- ◇ Motorenbau
- ◇ Schienenfahrzeuge
- ◇ Maschinenbau
- ◇ Hydraulik
- ◇ HLK
- ◇ Kältetechnik
- ◇ Prozess Techn.
- ◇ Wasseraufbereitung
- ◇ Autoindustrie
- ◇ Prüfstände
- ◆ **Ex**
SEV 11 ATEX 0145 X
- ◇ Lebensmittelindustrie
- ◇ Autoklaven

APPLICATIONS

- ◆ **Construction navale**
 GL, KRS
- ◇ Constr. de moteurs
- ◇ Véhicules sur rail
- ◇ Machines-outils
- ◇ Hydraulique
- ◇ CVC
- ◇ Réfrigération
- ◇ Techn. de procédés
- ◇ Traitement de l'eau
- ◇ Industrie automobile
- ◇ Banc d'essai à frein
- ◆ **Ex**
SEV 11 ATEX 0145 X
- ◇ Industrie alimentaire
- ◇ Autoclavage

APPLICATIONS

- ◆ **Shipbuilding**
 GL, KRS
- ◇ Engine manufacturing
- ◇ Railways
- ◇ Machine tools
- ◇ Hydraulics
- ◇ HVAC
- ◇ Refrigeration
- ◇ Process technology
- ◇ Water treatment
- ◇ Automotive industry
- ◇ Test benches
- ◆ **Ex**
SEV 11 ATEX 0145 X
- ◇ Food Industry
- ◇ Autoclaves



HAUPTMERKMALE

- ◆ Sensor: Piezoresistiv
- ◆ Messbereich: 0...0.1 bis 0...1000 bar
- ◆ Ausgangssignal: 4...20 mA
4...20 mA mit Blitzschutz
- ◆ NLH (BSL durch 0): ± 0.1 % d.S. typ.
± 0.25 % d.S. typ.
± 0.5 % d.S. typ.

CARACTÈRES DISTINCTIFS

- ◆ Capteur: Piézorésistif
- ◆ Plage de mesure: 0...0.1 à 0...1000 bar
- ◆ Signal de sortie: 4...20 mA
4...20 mA avec protection de parafoudre
- ◆ NLH (BSL par 0): ± 0.1 % E.M. typ.
± 0.25 % E.M. typ.
± 0.5 % E.M. typ.

MAIN CHARACTERISTICS

- ◆ Sensor: Piezoresistive
- ◆ Measuring range: 0...0.1 to 0...1000 bar
- ◆ Signal output: 4...20 mA
4...20 mA with lightning protection (Surge)
- ◆ NLH (BSL through 0): ± 0.1 % FS typ.
± 0.25 % FS typ.
± 0.5 % FS typ.

VORTEILE


- ◆ Explosionsschutz Ex ia IIC T3...T6
- ◆ Kleine Druckbereiche (bis 100mbar)
- ◆ Varianten mit frontbündigen Membranen
- ◆ Medientemperaturen bis 150°C
- ◆ EMV-Schutz, IEC 61000
- ◆ Optionaler Blitzschutz (IEC 61000-4-5)

AVANTAGES PRINCIPAUX

- ◆ Protection contre l'explosion Ex ia IIC T3...T6
- ◆ Petits plages de pression (jusqu' à 100mbar)
- ◆ Modifications avec membranes frontales
- ◆ Température du fluide à 150°C
- ◆ Protection CEM , CEI 61000
- ◆ Optional: Protection de parafoudre (IEC 61000-4-5)

MAIN FEATURES

- ◆ Explosion-proof Ex ia IIC T3...T6
- ◆ Low pressure ranges (to 100mbar)
- ◆ Versions with frontal flush diaphragm
- ◆ Media temperature to 150°C
- ◆ EMC Protection, IEC 61000
- ◆ Option: Lightning protection (IEC 61000-4-5)

 baugleiche Modelle mit anderen Spezifikationen:
version même construction avec d'autres spécifications:
identical construction with other specifications:

DATA SHEET NO: **H72230**
www.trafag.com/data sheets

BESTELLINFORMATION / INFORMATION POUR LA COMMANDE / ORDERING INFORMATION

Lager Code (kurze Lieferzeit)/ **Numéro de stock** (délai de livraison bref)/ **Code for stock products** (short delivery time): **EXNA** (z.B./ Ex./ e.g: EXNA0.2A)

 siehe Katalog/ voir catalogue/ see catalogue: „Standard Products“

Varianten Code/ Codification de variantes/ Custom build code

XXXX.XX.XX.XX.XX.XX.XX.XX...

Relativ/ Relatif/ Relative
Absolut/ Absolue/ Absolute

8852
8853

Bereich	0 ... 0.1	Überdruck max.	3	Berstdruck max.	200	66
Plage	0 ... 0.16	Surcharge surpression	3	Pression destruction	200	67
Range	0 ... 0.2	Over pressure	3	Burst pressure	200	68
	0 ... 0.4		3		200	69
[bar]	0 ... 0.6	[bar]	3	[bar]	200	70
	0 ... 1.0		3		200	71
	0 ... 1.6		4.8		200	73
	0 ... 2.5		7.5		200	75
	0 ... 4.0		12		200	76
	0 ... 6.0		18		200	77
	0 ... 10		30		200	78
	0 ... 16		48		200	79
	0 ... 25		75		200	80
	0 ... 40		120		850	81
	0 ... 60		180		850	82
	0 ... 100		300		850	83
	0 ... 160		480		850	85
	0 ... 250		750		850	74
	0 ... 400		850		850	84
	0 ... 600		850		850	86
	0 ... 1000		1500		1500	88
Sonderbereich nach Kundenwunsch, z.B.: Plage à spécifier par le client, p. ex.: Customized ranges on request, e.g.: -1... +4 bar, 0...5 bar, 0...12 bar						XX

Sensor	Typ 05 (Genauigkeit NLH/ Précision NLH/ Accuracy NLH: ± 0.5 % FS)	P5
Capteur	Typ 02 (Genauigkeit NLH/ Précision NLH/ Accuracy NLH: ± 0.25 % FS)	P2
Sensor	Typ 01 (Genauigkeit NLH/ Précision NLH/ Accuracy NLH: ± 0.1 % FS)	P1
Genauigkeit NLH / Précision NLH/ Accuracy NLH: siehe Tabelle/ voir table/ see table		


Druckanschluss	G 1/4" innen/ femelle/ female	10
Raccord	G 1/4" aussen/ mâle/ male	15
Pressure connection	G 1/4" aussen/ mâle/ male DIN16288 (Manometer/ manomètre/ manometer)	20
	G 1/2" aussen/ mâle/ male	21
	G 1/2" aussen/ mâle/ male Membrane: vorliegend/ frontal/ frontal	31
	G 1/2" aussen/ mâle/ male Membrane: frontbündig/ en face/ flush	32
	G 1/2" aussen/ mâle/ male DIN16288 (Manometer/ manomètre/ manometer)	11

Ausführung	PUR Kabel/ Câble PUR/ PUR Cable: Länge/ Longueur / Length [mm] (IP67)	22
Exécution	Gerätestecker/ Embase mâle/ Male electrical plug DIN43650 A (Mat.: PA) (IP65)	04
Execution	Binder 723 (Mat.: Zn) (IP67)	14
	MIL-C 26482 (Mat.: Al) (IP40)	02

Ausgangssignal	4...20mA	19
Signal de sortie	4...20mA mit Blitzschutz/ avec protection de parafoudre / with lightning protection (Surge)	09
Output		

Zubehör	Kabeldose/ Fiche femelle/ Female electrical connector	DIN43650 A	58
Accessoires		Binder 723	37
Accessories		MIL-C-26485, 6-pol.	32
	Spez. Ölfüllung/ Remplissage d'huile special/ Special oil filling	Aseol	94
		Halocarbon	95
	Temperaturklasse/ Class de température/ Temperature class	T3	T3
		T4	T4
		T6	T6

Dämpfungselemente und Snubber/ Élément d'amortissement à pointe de surpression et Snubber/ Damping elements and Snubber:
siehe Datenblatt/ voir spécification /see specification sheet H72258

 Trafag entwickelt und produziert auch speziell auf Ihre Bedürfnisse zugeschnittene Produkte. Bitte fragen Sie uns an.
Trafag développe et fabrique des produits adaptés à vos besoins spécifiques en se basant sur votre cahier des charges. Contactez-nous s.v.p.
Trafag develops and manufactures customized products according to your specifications to meet your requirements. Please contact us.

SPEZIFIKATIONEN

SPÉCIFICATIONS

SPECIFICATIONS

HAUPTMERKMALE

Sensor: Piezoresistiv
Messbereich: 0...0.1 bis 0...1000 bar
Ausgangssignal: 4...20 mA

CARACTÈRES DISTINCTIFS

Capteur: Piézorésistif
Plage de mesure: 0...0.1 à 0...1000 bar
Signal de sortie: 4...20 mA

MAIN CHARACTERISTICS

Sensor: Piezoresistive
Measuring range: 0...0.1 to 0...1000 bar
Signal output: 4...20 mA

GENAUIGKEIT

PRÉCISION

ACCURACY

Bereiche / Plage / Range	[bar]	0.1...0.5	0.5...2	2...25	25...600	>600
Genauigkeit NLH ¹⁾ / Précision NLH ¹⁾ / Accuracy NLH ¹⁾	[± % FS]					
	P5	0.5	0.5	0.5	0.5	0.5
	P2	0.25	0.25	0.25	0.25	0.25
	P1	—	0.1	0.1	0.1	—
Temp.koeffizient/ Influence therm./ Temp. coefficient [± % FS/K]						
Nullpunkt/ Point zéro/ Zero point	0...70°C	0.06	0.03	0.015	0.015	0.015
	Option -25...85°C	0.08	0.04	0.02	0.02	0.02
Spanne/ Sensibilité/ Span	0...70°C	0.015	0.015	0.015	0.015	0.015
	Option -25...85°C	0.02	0.02	0.02	0.02	0.02
Langzeitdrift/ Dérive à long terme/ Long term drift	[1 Jahr]	< 4 mbar	< 4 mbar	< 0.2% FS	< 0.2% FS	< 0.2% FS

¹⁾ BSL durch Null/ BSL par zéro/ BSL through zero

ELEKTRISCHE DATEN

Speisespannung: 4...20mA: 10...30 VDC
Bürde: 4...20 mA: $R_L \leq (U_S - 9V) / 20mA$
Reproduzierbarkeit: ±0.05% d.S.
Anstiegszeit: typ. 1 ms/ 10...90%
Nenndruck
Zenerbarriere: 30 VDC/ 100mA/ 1W

SPÉCIFICATIONS ÉLECTRIQUES

Tension d'alimentation: 4...20mA: 10...30 VDC
Charge: 4...20mA: $R_L \leq (U_S - 9V) / 20mA$
Reproductibilité: ±0.05% E.M.
Sensibilité de réponse: 1 ms/10...90% typ.
pression nominale
Zenerbarrière: 30 VDC/ 100mA/ 1W

ELECTRICAL DATA

Supply voltage: 4...20mA: 10...30 VDC
Load: 4...20mA: $R_L \leq (U_S - 9V) / 20mA$
Repeatability: ±0.05% FS
Rise time: typ. 1 ms/10...90%
nominal pressure
Zenerbarrier: 30 VDC/ 100mA/ 1W

UMGEBUNGSBEDINGUNGEN

CONDITIONS D'ENVIRONNEMENT

ENVIRONMENTAL CONDITIONS

Temp.klasse/ Classe temp./ Temp. class	[°C]	T3	T4	T6
Betriebstemp./ Temp. de service/ Operating temp.	[°C]	-25...+85	-25...+85	-25...+55
Medientemp./ Temp. du fluide/ Media temp.	[°C]	-25...+150	-25...+100	-25...+55
Lagertemp./ Temp. de stockage/ Storage temp.	[°C]	-25...+85	-25...+85	-25...+55

Normen/ Normes/ Normes: EN 1127-1, EN 60079-0, EN 60079-11, EN 60079-26, EN 61241-11

Schutzart: ²⁾ min. IP65
Feuchtigkeit: max. 95% relativ
Vibration: 6g (25...2000 Hz)
Schock: 50g/ 1 ms

Protection: ²⁾ min. IP65
Humidité: 95% max. relatif
Vibration: 6g (25...2000 Hz)
Choc: 50g/ 1 ms

Protection: ²⁾ min. IP65
Humidity: max. 95% relative
Vibration: 6g (25...2000 Hz)
Shock: 50g/ 1 ms

EMV-SCHUTZ

Emission: IEC 61000-6-3
Immunität: IEC 61000-6-2

CEM PROTECTION

Emission: CEI 61000-6-3
Immunité: CEI 61000-6-2

EMC PROTECTION

Emission: IEC 61000-6-3
Immunity: IEC 61000-6-2

MECHANISCHE DATEN

Material
Sensor: 1.4435 (AISI316L)
Gehäuse: 1.4435 (AISI316L)
O-Ring (medienberührend): FKM 70°Sh
Gerätestecker: siehe Bestellinformationen
Anziehdrehmoment: 25 Nm
Gewicht: ~ 220 g

SPÉCIFICATIONS MÉCANIQUES

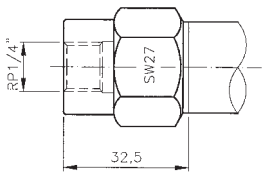
Matière
Capteur: 1.4435 (AISI316L)
Boîtier: 1.4435 (AISI316L)
O-Ring (contact. de médias): FKM 70°Sh
Embase mâle: voir information pour la commande
Couple de serrage: 25 Nm
Poids: ~ 220 g

MECHANICAL DATA

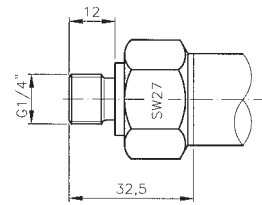
Material
Sensor: 1.4435 (AISI316L)
Housing: 1.4435 (AISI316L)
O-Ring (media contacting): FKM 70°Sh
Male electrical plug: see ordering information
Mounting torque: 25 Nm
Weight: ~ 220 g

²⁾ nur mit vorschriftsmässig montierter Kabeldose gültig/ valable seulement avec fiche femelle montée selon instructions/ provided female connector is mounted according to instructions

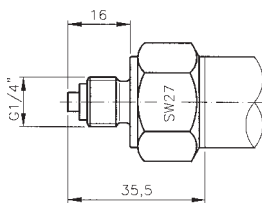
MASSBILDER & EL. ANSCHLUSS / COTES D'ENCOMBREMENT & RACCORDEM. ÉLECTR. / DIMENSIONS & EL. CONNECTION



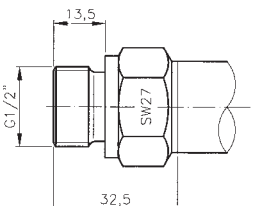
885X.XX.XX.10.XX.XX.XX...



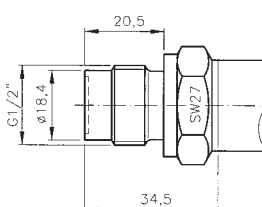
885X.XX.XX.15.XX.XX.XX...



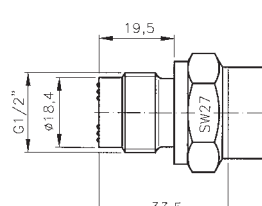
885X.XX.XX.20.XX.XX.XX...



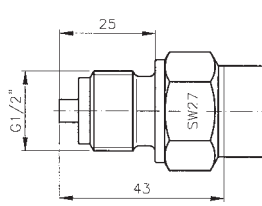
885X.XX.XX.21.XX.XX.XX...



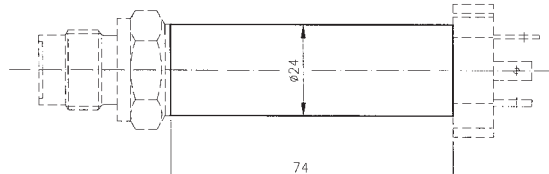
885X.XX.XX.31.XX.XX.XX...



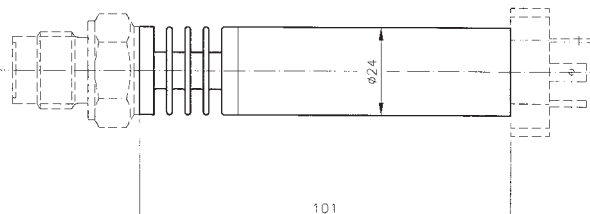
885X.XX.XX.32.XX.XX.XX...



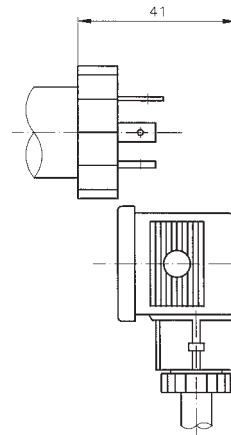
885X.XX.XX.11.XX.XX.XX...



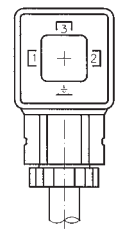
885X.XX.XX.XX.XX.XX.T4...
885X.XX.XX.XX.XX.XX.T6...



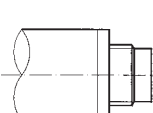
885X.XX.XX.XX.XX.XX.T3...



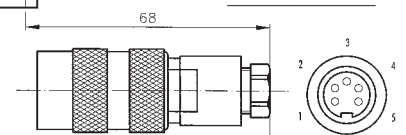
Pin 4...20mA
1 +Vin
2 Pout
3 ⚡



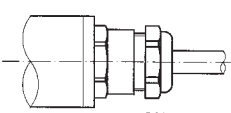
885X.XX.XX.XX.04.XX.58...



Pin 4...20mA
1 Pout
3 +Vin
5 ⚡

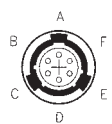
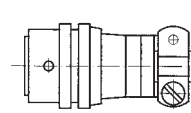
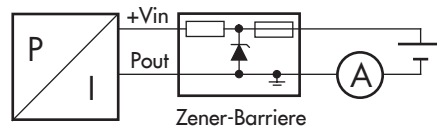


885X.XX.XX.XX.14.XX.37...

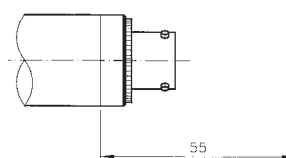


Farbe/ Couleur/ Color 4...20mA
weiss/ blanc/ white +Vin
gelb/ jaune/ yellow Pout
braun/ brun/ brown ⚡

885X.XX.XX.XX.22.XX.XX...



Pin 4...20mA
A +Vin
C Pout
F ⚡



885X.XX.XX.XX.02.XX.32...