



**ANWENDUNG**

- ◆ Schiffbau  GL, KRS
- ◇ Motorenbau
- ◇ Schienenfahrzeuge
- ◆ Maschinenbau
- ◆ Hydraulik
- ◆ HLK
- ◇ Kältetechnik
- ◆ Prozess Techn.
- ◆ Wasseraufbereitung
- ◇ Autoindustrie
- ◇ Prüfstände
- ◇ Ex
- ◆ Lebensmittelindustrie
- ◇ Autoklaven

**APPLICATIONS**

- ◆ Construction navale  GL, KRS
- ◇ Constr. de moteurs
- ◇ Véhicules sur rail
- ◆ Machines-outils
- ◆ Hydraulique
- ◆ CVC
- ◇ Réfrigération
- ◆ Techn. de procédés
- ◆ Traitement de l'eau
- ◇ Industrie automobile
- ◇ Banc d'essai à frein
- ◇ Ex
- ◆ Industrie alimentaire
- ◇ Autoclavage

**APPLICATIONS**

- ◆ Shipbuilding  GL, KRS
- ◇ Engine manufacturing
- ◇ Railways
- ◆ Machine tools
- ◆ Hydraulics
- ◆ HVAC
- ◇ Refrigeration
- ◆ Process technology
- ◆ Water treatment
- ◇ Automotive industry
- ◇ Test benches
- ◇ Ex
- ◆ Food Industry
- ◇ Autoclaves



**HAUPTMERKMALE**

- ◆ Sensor: Piezoresistiv
- ◆ Messbereich: 0...0.1 bis 0...1000 bar
- ◆ Ausgangssignal: 4...20 mA
- 4...20 mA mit Blitzschutz
- 0...10 VDC
- ◆ NLH (BSL durch 0): ± 0.1 % d.S. typ.
- ± 0.25 % d.S. typ.
- ± 0.5 % d.S. typ.

**VORTEILE**

- ◆ Kleine Druckbereiche (bis 100 mbar)
- ◆ Medientemperaturen bis 150°C
- ◆ EMV-Schutz, IEC 61000
- ◆ Optionaler Blitzschutz (IEC 61000-4-5); 10kA (8/20 µs)

**CARACTÈRES DISTINCTIFS**

- ◆ Capteur: Piézorésistif
- ◆ Plage de mesure: 0...0.1 à 0...1000 bar
- ◆ Signal de sortie: 4...20 mA
- 4...20 mA avec protection
- de parafoudre
- 0...10 VDC
- ◆ NLH (BSL par 0): ± 0.1 % E.M. typ.
- ± 0.25 % E.M. typ.
- ± 0.5 % E.M. typ.

**AVANTAGES PRINCIPAUX**

- ◆ Petits plages de pression (jusqu' à 100mbar)
- ◆ Température du fluide à 150°C
- ◆ Protection CEM, CEI 61000
- ◆ Optional: Protection de parafoudre (IEC 61000-4-5); 10kA (8/20 µs)

**MAIN CHARACTERISTICS**

- ◆ Sensor: Piezoresistive
- ◆ Measuring range: 0...0.1 to 0...1000 bar
- ◆ Signal output: 4...20 mA
- 4...20 mA with lightning
- protection (Surge)
- 0...10 VDC
- ◆ NLH (BSL through 0): ± 0.1 % FS typ.
- ± 0.25 % FS typ.
- ± 0.5 % FS typ.

**MAIN FEATURES**

- ◆ Low pressure ranges (to 100 mbar)
- ◆ Media temperature to 150°C
- ◆ EMC Protection, IEC 61000
- ◆ Option: Lightning protection (IEC 61000-4-5); 10kA (8/20 µs)




baugleiche Modelle mit anderen Spezifikationen:  
version même construction avec d'autres spécifications:  
identical construction with other specifications:

DATA SHEET NO: **H72227, H72232**  
[www.trafag.com/data-sheet](http://www.trafag.com/data-sheet)

**BESTELLINFORMATION / INFORMATION POUR LA COMMANDE / ORDERING INFORMATION**

Lager Code (kurze Lieferzeit)/ Numéro de stock (délai de livraison bref)/ Code for stock products (short delivery time): **NAP** (z.B./ Ex./ e.g: NAP0.1A)

 siehe Katalog/ voir catalogue/ see catalogue: „Standard Products“

Varianten Code/ Codification de variantes/ Custom build code

Relativ/ Relatif/ Relative

Absolut/ Absolue/ Absolute

XXXX.XX.XX.XX.XX.XX.XX.XX...

8842

8843

<b>Bereich</b>	0 ... 0.1	<b>Überdruck max.</b>	3	<b>Berstdruck max.</b>	200	<b>66</b>
<b>Plage</b>	0 ... 0.16	<b>Surcharge surpression</b>	3	<b>Pression destruction</b>	200	<b>67</b>
<b>Range</b>	0 ... 0.2	<b>Over pressure</b>	3	<b>Burst pressure</b>	200	<b>68</b>
	0 ... 0.4		3		200	<b>69</b>
<b>[bar]</b>	0 ... 0.6	<b>[bar]</b>	3	<b>[bar]</b>	200	<b>70</b>
	0 ... 1.0		3		200	<b>71</b>
	0 ... 1.6		4.8		200	<b>73</b>
	0 ... 2.5		7.5		200	<b>75</b>
	0 ... 4.0		12		200	<b>76</b>
	0 ... 6.0		18		200	<b>77</b>
	0 ... 10		30		200	<b>78</b>
	0 ... 16		48		200	<b>79</b>
	0 ... 25		75		200	<b>80</b>
	0 ... 40		120		850	<b>81</b>
	0 ... 60		180		850	<b>82</b>
	0 ... 100		300		850	<b>83</b>
	0 ... 160		480		850	<b>85</b>
	0 ... 250		750		850	<b>74</b>
	0 ... 400		850		850	<b>84</b>
	0 ... 600		850		850	<b>86</b>
	0 ... 1000		1500		1500	<b>88</b>
Sonderbereich nach Kundenwunsch, z.B.:						
Plage à spécifier par le client, p. ex.:						
Customized ranges on request, e.g.:						
				-1... +4 bar, 0...5 bar, 0...12 bar		<b>XX</b>

<b>Sensor</b>	Typ 05	(Genauigkeit NLH/ Précision NLH/ Accuracy NLH: ± 0.5 % FS)	<b>P5</b>
<b>Capteur</b>	Typ 02	(Genauigkeit NLH/ Précision NLH/ Accuracy NLH: ± 0.25 % FS)	<b>P2</b>
<b>Sensor</b>	Typ 01	(Genauigkeit NLH/ Précision NLH/ Accuracy NLH: ± 0.1 % FS)	<b>P1</b>
Genauigkeit NLH / Précision NLH/ Accuracy NLH: siehe Tabelle/ voir table/ see table			


<b>Druckanschluss</b>	G 1/4"	innen/ femelle/ female	<b>10</b>
<b>Raccord</b>	G 1/4"	aussen/ mâle/ male	<b>15</b>
<b>Pressure connection</b>	G 1/4"	aussen/ mâle/ male DIN16288 (Manometer/ manomètre/ manometer)	<b>20</b>
	G 1/2"	aussen/ mâle/ male	<b>21</b>
	G 1/2"	aussen/ mâle/ male Membrane: vorne liegend/ frontal/ frontal	<b>31</b>
	G 1/2"	aussen/ mâle/ male Membrane: frontbündig/ en face/ flush	<b>32</b>
	G 1/2"	aussen/ mâle/ male DIN16288 (Manometer/ manomètre/ manometer)	<b>11</b>

<b>Ausführung</b>	PUR Kabel/ Câble PUR/ PUR Cable:	Länge/ Longueur / Length ..... [mm]	(IP67)	<b>22</b>
<b>Exécution</b>	Gerätestecker/ Embase mâle/ Male electrical plug	DIN43650 A (Mat.: PA)	(IP65)	<b>04</b>
<b>Execution</b>		Binder 723 (Mat.: Zn)	(IP67)	<b>14</b>
		MIL-C 26482 (Mat.: Al)	(IP40)	<b>02</b>

<b>Ausgangssignal</b>	4...20mA	<b>19</b>
<b>Signal de sortie</b>	4...20mA mit Blitzschutz/ avec protection de parafoudre / with lightning protection (Surge)	<b>09</b>
<b>Output</b>	0...10V DC	<b>17</b>

<b>Zubehör</b>	Kabeldose/ Fiche femelle/ Female electrical connector	DIN43650 A	<b>58</b>
<b>Accessoires</b>		Binder 723	<b>37</b>
<b>Accessories</b>		MIL-C-26485, 6-pol.	<b>32</b>
	Spez. Ölfüllung/ Remplissage d'huile special/ Special oil filling	Aseol	<b>94</b>
		Halocarbon	<b>95</b>
	8842: Elektronik vergossen/ 8842: électronique scellée/ 8842: electronics packed in gel		<b>96</b>
	PUR Kabel/ Câble PUR/ PUR cable: IP67		<b>48</b>
	Betriebstemperatur/ Température de service/ Operating temperature -25...85°C		<b>69</b>
	(Medientemp./ Temp. du fluide/ Media temp. -25...100°C)		
	Betriebstemperatur/ Température de service/ Operating temperature -25...85°C		<b>70</b>
	(Medientemp./ Temp. du fluide/ Media temp. -25...150°C)		

**Dämpfungselemente und Snubber/ Élément d'amortissement à pointe de surpression et Snubber/ Damping elements and Snubber:**  
siehe Datenblatt/ voir spécification /see specification sheet H72258

 Trafag entwickelt und produziert auch speziell auf Ihre Bedürfnisse zugeschnittene Produkte. Bitte fragen Sie uns an.  
Trafag développe et fabrique des produits adaptés à vos besoins spécifiques en se basant sur votre cahier des charges. Contactez-nous s.v.p.  
Trafag develops and manufactures customized products according to your specifications to meet your requirements. Please contact us.

**SPEZIFIKATIONEN**
**SPÉCIFICATIONS**
**SPECIFICATIONS**
**HAUPTMERKMALE**

Sensor: Piezoresistiv  
 Messbereich: 0...0.1 bis 0...1000 bar  
 Ausgangssignal: 4...20 mA  
 0...10 VDC

**CARACTÈRES DISTINCTIFS**

Capteur: Piézorésistif  
 Plage de mesure: 0...0.1 à 0...1000 bar  
 Signal de sortie: 4...20 mA  
 0...10 VDC

**MAIN CHARACTERISTICS**

Sensor: Piezoresistive  
 Measuring range: 0...0.1 to 0...1000 bar  
 Signal output: 4...20 mA  
 0...10 VDC

**GENAUIGKEIT**
**PRÉCISION**
**ACCURACY**

Bereiche / Plage / Range [bar]	0.1...0.5	0.5...2	2...25	25...600	>600
Genauigkeit NLH <sup>1)</sup> / Précision NLH <sup>1)</sup> / Accuracy NLH <sup>1)</sup> [± % FS]					
P5	0.5	0.5	0.5	0.5	0.5
P2	0.25	0.25	0.25	0.25	0.25
P1	—	0.1	0.1	0.1	—
Temp.koeffizient/ Influence therm./ Temp. coefficient [± % FS/K]					
Nullpunkt/ Point zéro/ Zero point 0...70°C	0.06	0.03	0.015	0.015	0.015
Option -25...85°C	0.08	0.04	0.02	0.02	0.02
Spanne/ Sensibilité/ Span 0...70°C	0.015	0.015	0.015	0.015	0.015
Option -25...85°C	0.02	0.02	0.02	0.02	0.02
Langzeitdrift/ Dérive en longue durée/ Long term drift [1 Jahr]	< 4 mbar	< 4 mbar	< 0.2% FS	< 0.2% FS	< 0.2% FS

<sup>1)</sup> BSL durch Null/ BSL par zéro/ BSL through zero

**ELEKTRISCHE DATEN**

Speisespannung  
 4...20mA: 9...33V DC  
 0...10V DC: 15...30V DC  
 Bürde  
 4...20 mA:  $R_L \leq (U_S - 9V)/20mA$   
 0...10 VDC:  $R_L > 10 K\Omega$   
 Reproduzierbarkeit: ±0.05 % d.S.  
 Anstiegszeit: typ. 1 ms/ 10...90%  
 Nenndruck

**SPÉCIFICATIONS ÉLECTRIQUES**

Tension d'alimentation  
 4...20mA: 9...33V DC  
 0...10V DC: 15...30V DC  
 Charge  
 4...20mA:  $R_L \leq (U_S - 9V)/20mA$   
 0...10V DC:  $R_L > 10 K\Omega$   
 Reproductibilité: ±0.05% E.M.  
 Sensibilité de réponse: 1 ms/10...90% typ.  
 pression nominale

**ELECTRICAL DATA**

Supply voltage  
 4...20mA: 9...33V DC  
 0...10V DC: 15...30V DC VDC  
 Load:  
 4...20mA:  $R_L \leq (U_S - 9V)/20mA$   
 0...10V DC:  $R_L > 10 K\Omega$   
 Repeatability: ±0.05% FS  
 Rise time: typ. 1 ms/10...90%  
 nominal pressure

**UMGEBUNGSBEDINGUNGEN**

Betriebstemperatur: 0...+70°C  
 (opt. -25...+85°C)  
 Medientemperatur 0...+80°C  
 (opt. -25...+100°C/ -25...+150°C)  
 Schutzart: <sup>2)</sup> min. IP65  
 Feuchtigkeit: max. 95% relativ  
 Vibration: 6g (25...2000 Hz)  
 Schock: 50g/ 1 ms

**CONDITIONS D'ENVIRONNEMENT**

Température de service: 0...+70°C  
 (opt. -25...+85°C)  
 Température de médias: 0...+80°C  
 (opt. -25...+100°C/ -25...+150°C)  
 Protection: <sup>2)</sup> min. IP65  
 Humidité: 95% max. relatif  
 Vibration: 6g (25...2000 Hz)  
 Choc: 50g/ 1 ms

**ENVIRONMENTAL CONDITIONS**

Operating temperature: 0...+70°C  
 (opt. -25...+85°C)  
 Media temperature: 0...+80°C  
 (opt. -25...+100°C/ -25...+150°C)  
 Protection: <sup>2)</sup> min. IP65  
 Humidity: max. 95% relative  
 Vibration: 6g (25...2000 Hz)  
 Shock: 50g/ 1 ms

**EMV-SCHUTZ**

Emission: IEC 61000-6-3  
 Immunität: IEC 61000-6-2

**CEM PROTECTION**

Emission: CEI 61000-6-3  
 Immunité: CEI 61000-6-2

**EMC PROTECTION**

Emission: IEC 61000-6-3  
 Immunity: IEC 61000-6-2

**MECHANISCHE DATEN**

Material  
 Sensor: 1.4435 (AISI316L)  
 Gehäuse: 1.4435 (AISI316L)  
 O-Ring (medienberührend): FKM 70°Sh  
 Gerätestecker: siehe Bestellinformationen  
 Anziehdrehmoment: 25 Nm  
 Gewicht: ~ 220 g

**SPÉCIFICATIONS MÉCANIQUES**

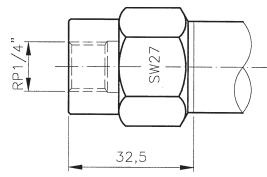
Matière  
 Capteur: 1.4435 (AISI316L)  
 Boîtier: 1.4435 (AISI316L)  
 O-Ring (contact. de médias): FKM 70°Sh  
 Embase mâle: voir information pour la commande  
 25 Nm  
 Couple de serrage: 25 Nm  
 Poids: ~ 220 g

**MECHANICAL DATA**

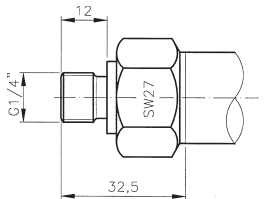
Material  
 Sensor: 1.4435 (AISI316L)  
 Housing: 1.4435 (AISI316L)  
 O-Ring (media contacting): FKM 70°Sh  
 Male electrical plug: see ordering information  
 Mounting torque: 25 Nm  
 Weight: ~ 220 g

<sup>2)</sup> nur mit vorschriftsmässig montierter Kabeldose gültig/ valable seulement avec fiche femelle montée selon instructions/ provided female connector is mounted according to instructions

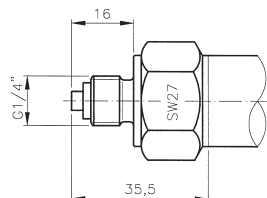
**MASSBILDER & EL. ANSCHLUSS / COTES D'ENCOMBREMENT & RACCORDEM. ÉLECTR. / DIMENSIONS & EL. CONNECTION**



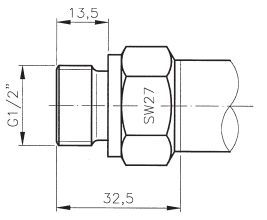
884X.XX.XX.10.XX.XX.XX...



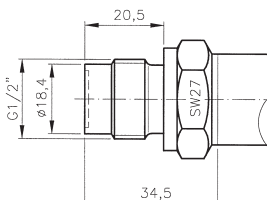
884X.XX.XX.15.XX.XX.XX...



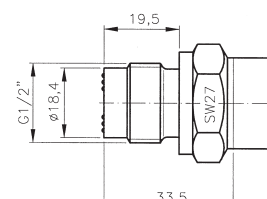
884X.XX.XX.20.XX.XX.XX...



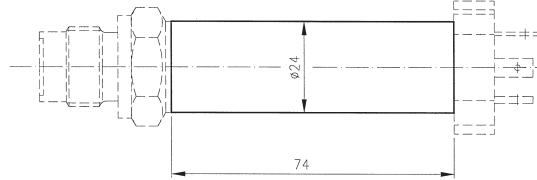
884X.XX.XX.21.XX.XX.XX...



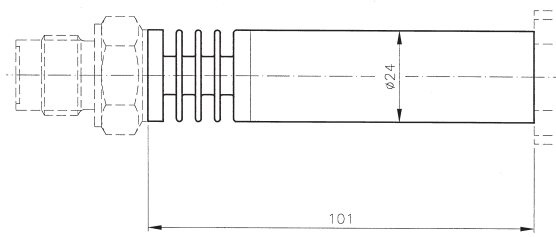
884X.XX.XX.31.XX.XX.XX...



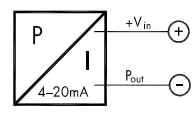
884X.XX.XX.32.XX.XX.XX...



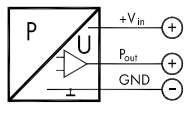
884X.XX.XX.XX.XX.XX.XX...  
884X.XX.XX.XX.XX.XX.69...



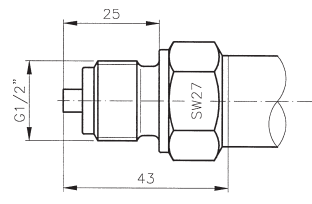
884X.XX.XX.XX.XX.XX.70...



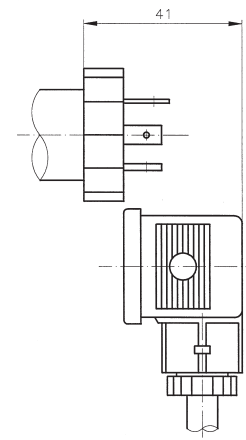
4...20 mA



0...10 V DC

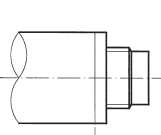


884X.XX.XX.11.XX.XX.XX...



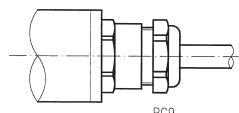
Pin	4...20mA	0...10VDC
1	+Vin	+Vin
2	Pout	Pout
3		GND

884X.XX.XX.XX.04.XX.58...



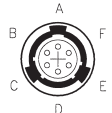
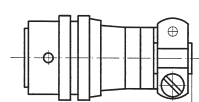
Pin	4...20mA	0...10VDC
1	Pout	Pout
3	+Vin	+Vin
4		GND

884X.XX.XX.XX.14.XX.37...



Farbe/ Couleur/ Color	4...20mA	0...10VDC
weiss/ blanc/ white	+Vin	+Vin
gelb/ jaune/ yellow	Pout	GND
braun/ brun/ brown		Pout

884X.XX.XX.XX.22.XX.XX...



Pin	4...20mA	0...10VDC
A	+Vin	+Vin
B		GND
C	Pout	Pout

884X.XX.XX.XX.02.XX.32...