

X-PLUS B *Drives*

GENERAL DESCRIPTION

X-PLUS B are ministep bipolar stepping drives with power input directly from the main AC supply.

X-PLUS B drives are housed in a metallic box, 152 x 129 x 46 mm format, suitable for wall mounting. They can be connected directly to the main AC supply (110 to 230 V_{AC}) normally avoiding the need for a transformer.

The wide supply range eases the use of this drive in different applications and countries.

They do not need external fans: accordingly, they are ideal both for mounting inside a metallic electrical cabinet and for stand-alone applications.

The ministep operation, connected with a further electronic resonance damping facility, ensures low acoustic noise and a reduced amount of motor mechanical vibrations.

Optically insulated and differential input/output signals ease interfacing with the most commonly used control systems and ensure high noise immunity.

**ONE OF THE
MOST COMPACT
DRIVES WITH
POWER INPUT
DIRECTLY FROM THE
MAIN AC SUPPLY
(110 - 230 VAC)**



Motion Control Systems

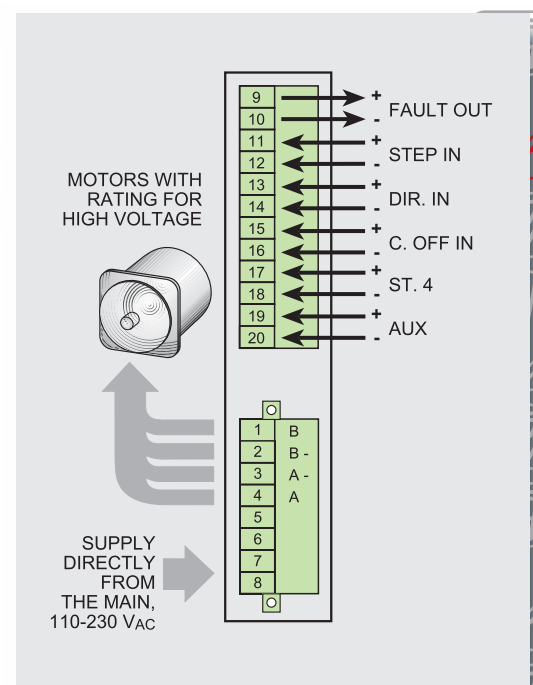
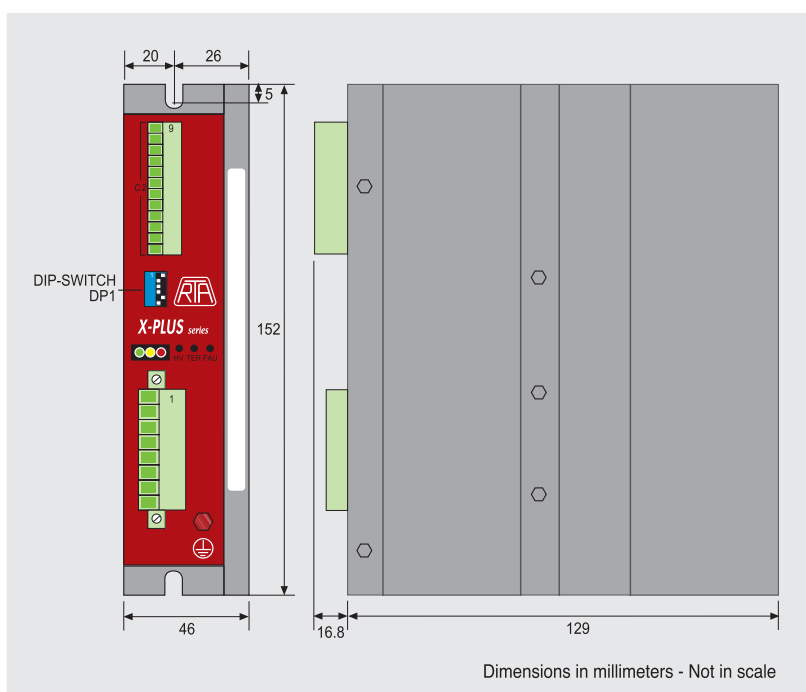
R.T.A. STEPPING MOTOR DRIVES catalogue

TECHNICAL FEATURES

- Operation directly from the main AC supply (from 110 to 230 V_{AC}). No need of external transformer and rectifier.
- High voltage DC bus: direct rectifier from main AC supply.
- Easy motor phase current setting by means of DIP-SWITCH.
- Operation at 400, 800, 1600, 3200 and 500, 1000, 2000, 4000 steps/revolution.
- Automatic current reduction at motor standstill.
- Protection against short circuit at motor outputs.
- Protection against under-voltage and over-voltage.
- Overheating protection with thermal sensor.
- Optoinsulated inputs compatible with differential control signals.
- Possibility to switch off motor current with an external logic signal.
- High efficiency CHOPPER with IGBT final stage output.
- Alarm memory by use of yellow blinking LED.
- Electronic resonance damping circuit to ensure acoustic noise and mechanical vibrations reduction at low and medium speed.

NOTE: Motors with rating for high voltage must be used in coupling with this drive.

Model	V _{AC} range	I _{NF} min. (Peak value)	I _{NF} max. (Peak value)	Dimensions
	(VOLT)	(AMP)	(AMP)	(mm.)
X-PLUS B4	110 to 230 +/- 15%	2.4	4	152x129x46



R.T.A. s.r.l.
Via E. Mattei - Fraz. Divisa
27020 MARCIGNAGO (PV) ITALY
Tel. +39.0382.929.855 - Fax +39.0382.929.150
www.rta.it

R.T.A. Deutschland GmbH
Bublitz Straße, 34
40599 DÜSSELDORF (Germany)
Tel. +49.211.749.668.60 - Fax +49.211.749.668.66
www.rta-deutschland.de

R.T.A. IBERICA-Motion Control Systems S.L.
C/Generalitat 22, 1° 3°
08850 GAVA - BARCELONA (Spain)
Tel. +34.936.388.805 - Fax +34.936.334.595
www.rta-iberica.es